



# User Guide

## EVB-ATEK357P4-02

---

Document Code : 023-103301  
Revision No : 01  
Revision Date : 23/03/2022

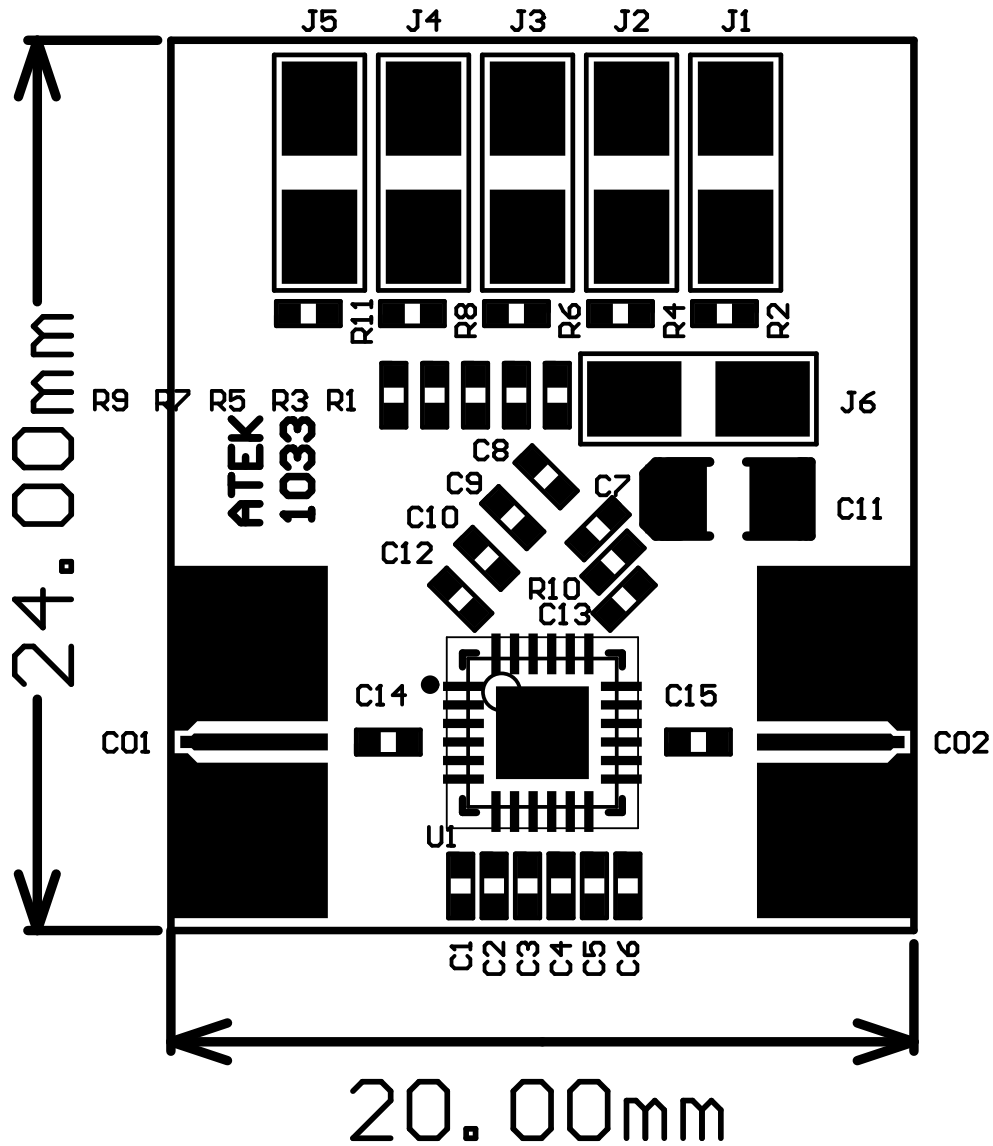
**Revisions**

Revision No	Revision Date	Revision Reason	Section / Page No
1.0	23.03.2022	Initial Release	

**INDEX**

<b>1</b>	<b>GENERAL INFORMATION .....</b>	<b>3</b>
<b>2</b>	<b>DESIGN INFORMATION .....</b>	<b>4</b>
<b>2.1</b>	<b>SCHEMATIC .....</b>	<b>4</b>
<b>2.2</b>	<b>BOM .....</b>	<b>4</b>
<b>3</b>	<b>TYPICAL PERFORMANCE PLOTS.....</b>	<b>5</b>

1 GENERAL INFORMATION



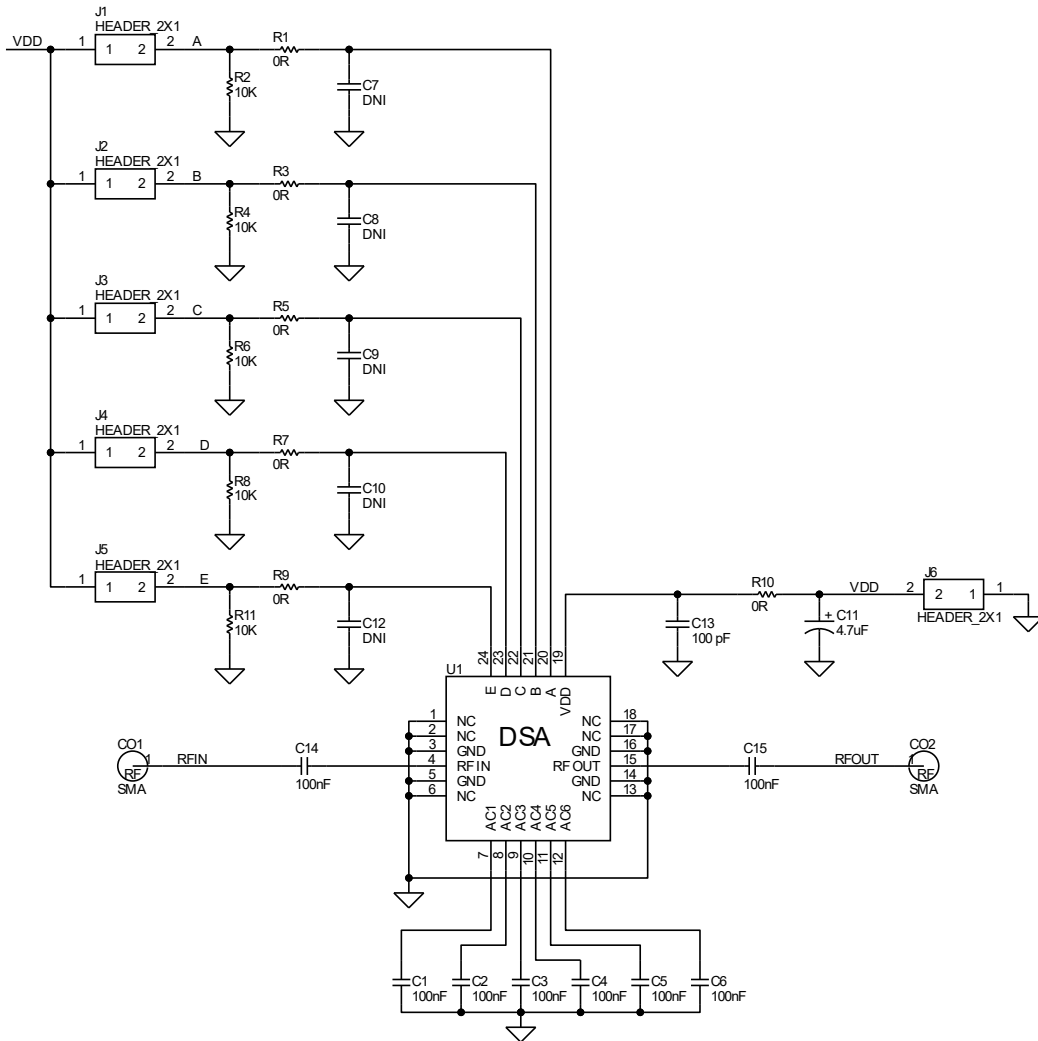
PIN Name	Definition	Comment
CO1	RF IN	K Connector
CO2	RF OUT	K Connector
J6 Left	VDD	2.54mm Header
J1 Up, J2 Up, J3 Up, J4 Up J5 Up, J6 Right	GND	2.54mm Header
J1 Down	P1 – CTRLA	2.54mm Header
J2 Down	P2 – CTRLB	2.54mm Header
J3 Down	P3 – CTRLC	2.54mm Header
J4 Down	P4 – CTRLD	2.54mm Header
J5 Down	P5 – CTRL E	2.54mm Header

Notes:

1. VDD Voltage is detailed in Datasheet.
2. Control Voltages are detailed in Datasheet.
3. The definition of right and left is valid for this view of PCB.

2 DESIGN INFORMATION

2.1 SCHEMATIC



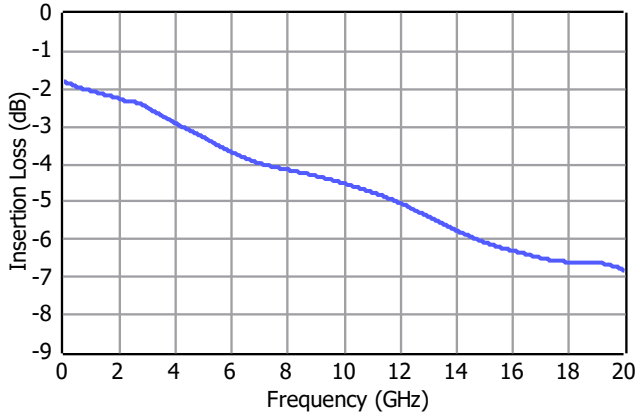
2.2 BOM

Designator	Footprint	Qty	Comment	PN
<b>C1, C2, C3, C4, C5, C6</b>	0402	6	100nF	
<b>C7, C8, C9, C10, C12</b>	0402	5	DNP	
<b>C14, C15</b>	0402	2	100nF	530Z104KT10T
<b>C11</b>	CASEA	1	2.2uF	
<b>C13</b>	0402	1	100pF	
<b>CO1, CO2</b>	K Connector	2	K Connector	ATEK9292
<b>J1, J2, J3, J4, J5, J6</b>	2x1 Header	6	2x1 Header	
<b>R1, R3, R5, R7, R9, R10</b>	0402	6	0R	
<b>R2, R4, R6, R8, R11</b>	0402	5	10k	
<b>U1</b>	ATEKQ4424	1	DSA	ATEK357 P61

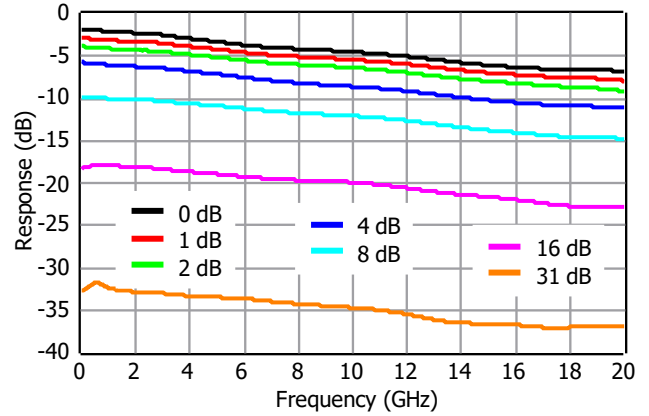
3 TYPICAL PERFORMANCE PLOTS

Conditions unless otherwise specified:  $V_{CTRL} = 0/5\text{ V}$ ,  $T = 25\text{ C}$ , CW. For details, please refer to the datasheet.

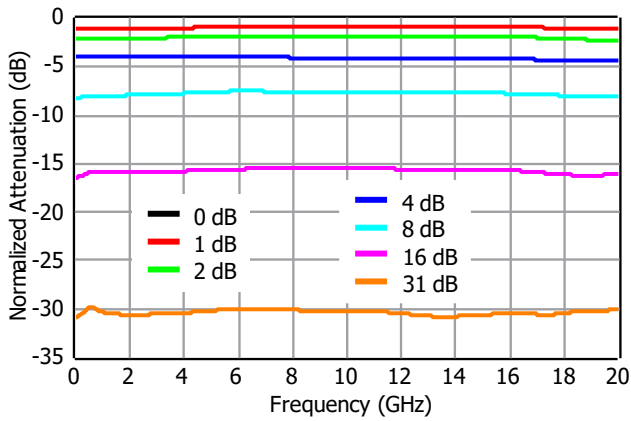
Insertion Loss



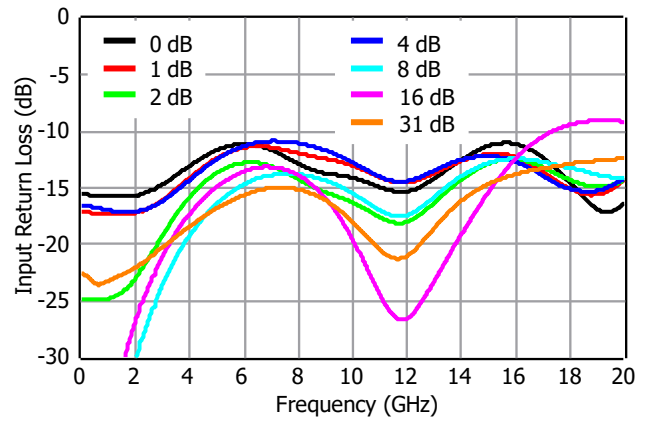
Insertion Loss vs. Attenuation State



Normalized Attenuation



Input Return Loss



Output Return Loss

