



# User Guide

## EVB-ATEK551P3-01

---

Document Code : 023-122201  
Revision No : 01  
Revision Date : 08/09/2022

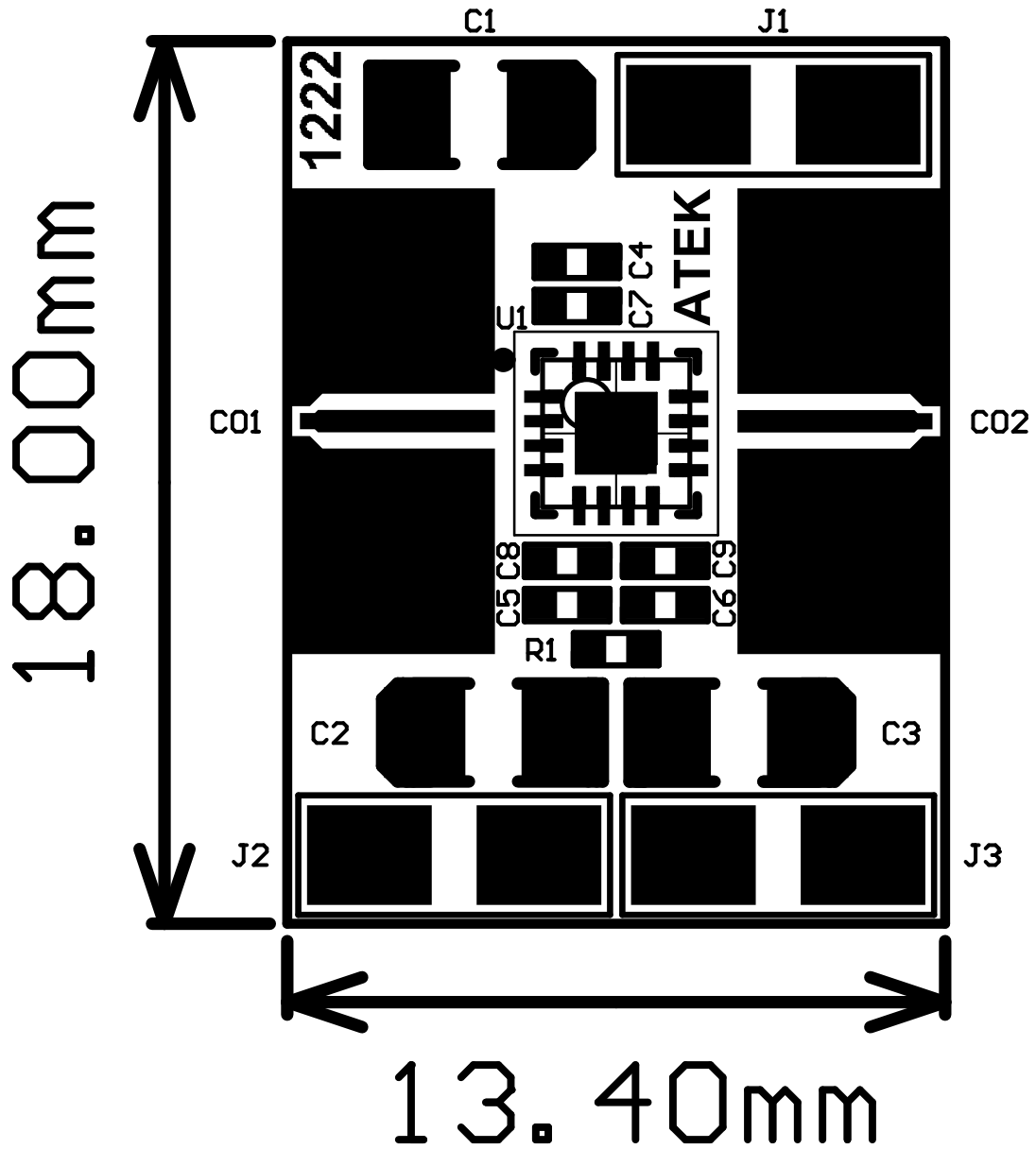
**Revisions**

Revision No	Revision Date	Revision Reason	Section / Page No
1.0	08.09.2022	Initial Release	

**INDEX**

1	GENERAL INFORMATION .....	3
2	DESIGN INFORMATION .....	4
2.1	SCHEMATIC .....	4
2.2	BOM .....	4
3	TYPICAL PERFORMANCE PLOTS.....	5

1 GENERAL INFORMATION



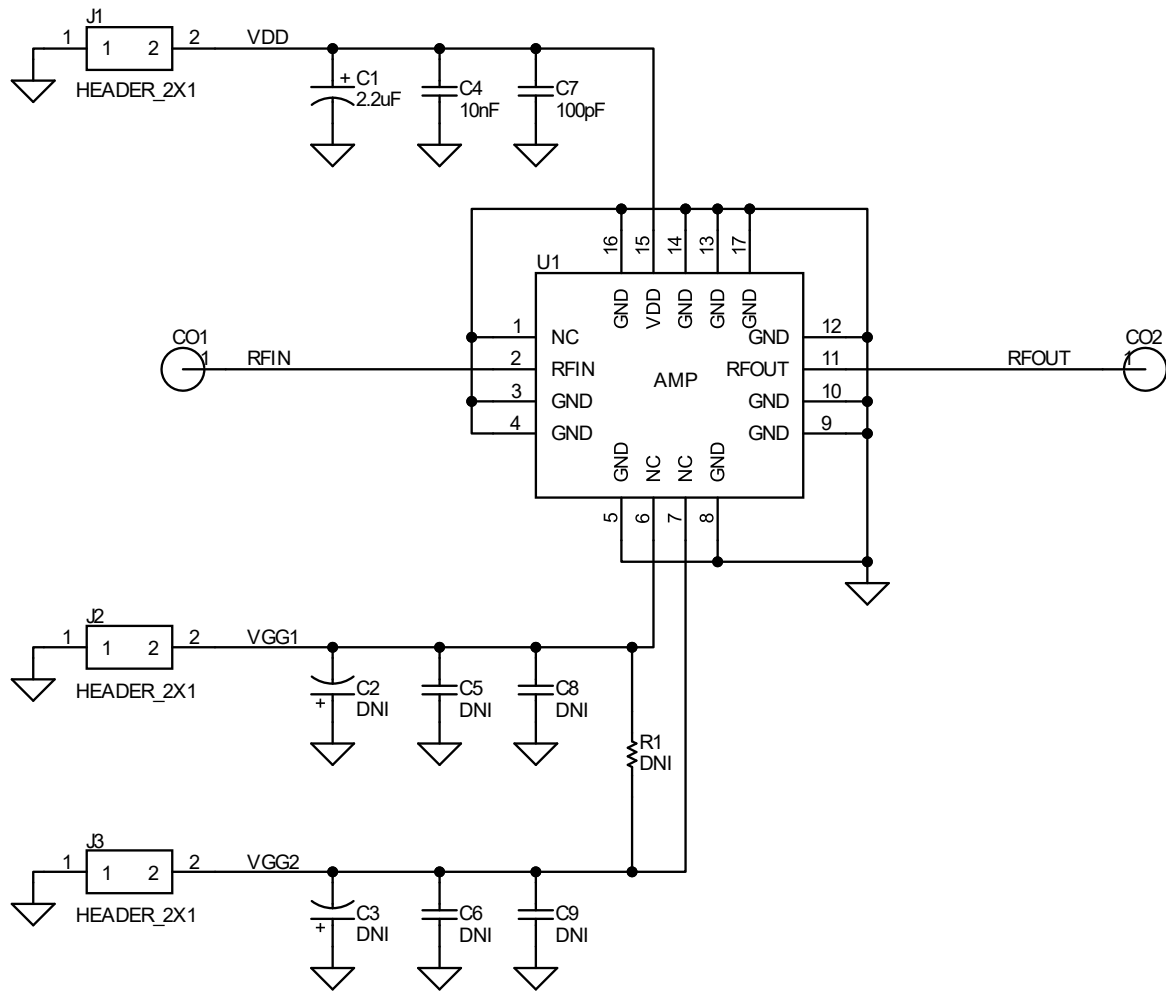
PIN Name	Definition	Comment
<b>CO1</b>	RF IN	SMA Connector
<b>CO2</b>	RF OUT	SMA Connector
<b>J1 Right</b>	GND	2.54mm Header
<b>J1 Left</b>	VDD	2.54mm Header
<b>J2 Right, J2 Left, J3 Right, J3 Left</b>	N/A	2.54mm Header

Notes:

1. VDD Voltage is detailed in Datasheet.
2. The definition of right and left is valid for this view of PCB.

2 DESIGN INFORMATION

2.1 SCHEMATIC



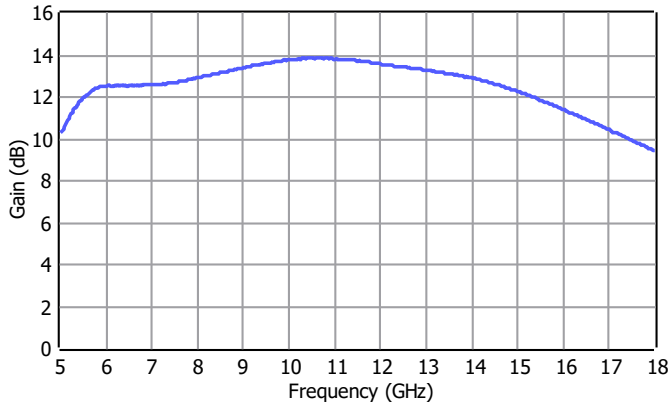
2.2 BOM

Designator	Footprint	Qty	Comment	PN
C1	CASEA	1	2.2uF	
C2, C3	CASEA	2	DNP	
C4	0402	1	10nF	
C5, C6, C8, C9	0402	4	DNP	
R1	0402	1	DNP	
C7	0402	1	100pF	
CO1, CO2	SMA Connector	2	SMA Connector	
J1	2x1 Header	1	2x1 Header	
J2, J3	2x1 Header	2	2x1 Header	
U1	ATEKQ3316	1	Amplifier	ATEK551P3

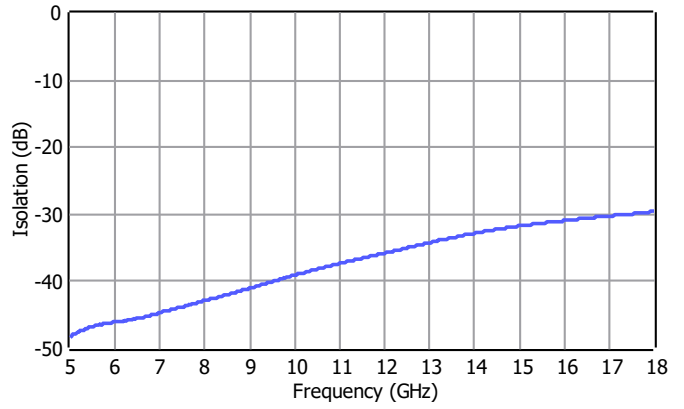
3 TYPICAL PERFORMANCE PLOTS

Conditions unless otherwise specified:  $V_{dd} = 5\text{ V}$ ,  $T = 25\text{ C}$ , CW. For details, please refer to the datasheet.

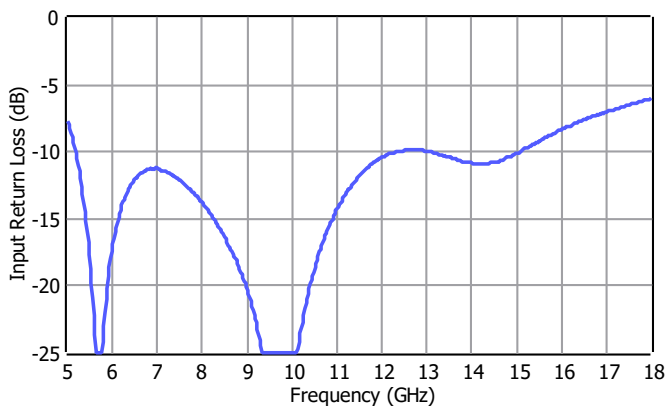
Gain



Isolation



Input Return Loss



Output Return Loss

